



PRODUCT GUIDE 2022



CrollalceCream.co.uk



Contents

| | |
|----------------------------------|----|
| Catering Range | 1 |
| Parlour Range | 3 |
| Speciality Ice Creams | 9 |
| Cakes & Desserts | 10 |
| Buffet Range | 15 |
| Bulk Ice Cream Range | 16 |
| Fresh Crolla Mix & Long Life Mix | 17 |
| Retail Range | 17 |
| Terms of Business | 19 |

Ordering Information

TO ORDER

Contact our Sales Team on **0141 423 1161**.

A member of our Sales Team will be available to answer your call during opening hours. Additionally, for your convenience, we also have an answering service outwith these hours.

Orders can also be placed by emailing orders@crollaicecream.co.uk

Our Factory is open for collections during our opening hours, should you not wish to phone in an order and book a delivery. (We are open to the public and business accounts are not required for collections).

OPENING HOURS

Monday to Friday: 8am – 16.45.
Saturday: 8am – 11.45am
Sunday : Closed

If you wish to contact our Sales Manager email john.morrison@crollaicecream.co.uk or peter@crollas.com

NUT ALLERGY ADVICE

Our products are made in a factory that also handles nuts.



In 2020 the Crolla Ice Cream Company celebrated **125 years!**

And we couldn't have done it without you.

We are absolutely delighted to say that 2020 marked the 125th year that Crolla's have been making traditional Italian ice cream in Glasgow.

It was 1895 when a young Serafino Crolla exchanged the warm sunshine of southern Italy for the less predictable climes of Scotland, setting up his first shop in Queen Mary Street, Glasgow.

His son Giuseppe opened a second shop in Clydebank, and after World War I he returned to Scotland and opened the Premier Cafe in Main Street, Bridgeton (shown opposite). This was followed by expansion into the two adjoining premises.

By 1950 the family had started up an ice cream factory and had 30 vans selling their delicious ice cream around the streets of Glasgow.

Today the firm still supplies ice cream vans, but has expanded to supply shops, cafes, wholesalers, restaurants and hotels. We have always been firmly committed to producing top quality ice cream and a look through this brochure will give some idea of the fantastic range of products Crolla's now supplies.

Peter Crolla, Serafino's great-grandson, has now established the fourth generation of Crollas – a family firm in the true sense of the word. With their commitment to quality ingredients and their secret family recipes we are sure you will agree the difference between Crolla's ice cream and the rest is **'in the taste'**.

Our journey continues and we would like to take this opportunity to thank all of our loyal customers who have helped Crolla's become the successful family business it continues to be.





Catering Range

| Code | Product | Litres | Price |
|------|---------|--------|-------|
|------|---------|--------|-------|

Soft Serve

| | | | |
|-----|-----------------------|---|--------|
| 001 | Vanilla | 4 | £9.80 |
| 002 | Chocolate | 4 | £11.25 |
| 003 | Strawberry | 4 | £11.25 |
| 004 | Raspberry Ripple | 4 | £11.25 |
| 025 | Cookies Cream | 4 | £12.25 |
| 027 | Horchata | 4 | £11.95 |
| 007 | Caramel Shortcake | 4 | £11.99 |
| 008 | Mango | 4 | £11.99 |
| 009 | Toffee Crunch | 4 | £11.99 |
| 014 | Coconut | 4 | £11.99 |
| 015 | Honeycomb | 4 | £11.99 |
| 024 | Tablet (Scottish) | 4 | £11.99 |
| 018 | Dime Bar | 4 | £12.15 |
| 045 | Salted Caramel | 4 | £12.10 |
| 011 | Rum & Raisin (a) | 4 | £12.70 |
| 017 | Mango & Raspberry | 4 | £12.70 |
| 006 | Banana | 4 | £12.70 |
| 028 | Turkish Delight | 4 | £13.20 |
| 029 | Kinder | 4 | £13.20 |
| 016 | Mint Chocolate Chip | 4 | £13.20 |
| 013 | Chilli Chocolate Chip | 4 | £13.25 |
| 020 | Pistachio | 4 | £13.55 |
| 010 | Iron Brew | 4 | £13.60 |
| 050 | Honey | 4 | £14.45 |
| 051 | Yoghurt | 4 | £14.45 |
| 047 | Nuttella | 4 | £15.15 |
| 019 | After Dinner Mint | 4 | £15.60 |
| 022 | Nocciola (Hazelnut) | 4 | £15.69 |
| 023 | Ferrero | 4 | £15.69 |
| 005 | Chocolate Orange | 4 | £12.75 |

| Code | Product | Litres | Price |
|------|---------|--------|-------|
|------|---------|--------|-------|

Jimmy Gelato (Half Dairy)

| | | | |
|-----|---------------------|---|-------|
| 520 | Vanilla | 4 | £6.70 |
| 521 | Chocolate | 4 | £7.45 |
| 522 | Strawberry | 4 | £7.45 |
| 523 | Mint Chocolate Chip | 4 | £8.40 |
| 026 | Blue Bubblegum | 4 | £9.35 |

| Code | Product | Litres | Price |
|------|---------|--------|-------|
|------|---------|--------|-------|

Sorbet

| | | | |
|-----|------------------------------------|-----|--------|
| 032 | Strawberry | 2.5 | £8.30 |
| 038 | Forest Fruit (inc Blackcurrant) | 2.5 | £8.50 |
| 060 | Pomegranate | 2 | £9.00 |
| 036 | Champagne | 2 | £9.00 |
| 061 | Passion Fruit | 2.5 | £9.25 |
| 062 | Lemon | 2.5 | £9.25 |
| 063 | Orange | 2.5 | £9.25 |
| 064 | Raspberry | 2.5 | £9.25 |
| 065 | Mango | 2.5 | £9.25 |
| 039 | Lemon Sorbet | 4 | £11.85 |
| 042 | Orange Sorbet | 4 | £11.85 |
| 054 | Tango Ice Blast | 4 | £13.35 |

| Code | Product | Price |
|------|---------|-------|
|------|---------|-------|

Containers

| | | |
|-----|-------------------------|-------|
| 757 | 2 Litre | £0.50 |
| 756 | 4 Litre | £0.72 |
| 292 | 2 Litre with lid | £0.80 |
| 291 | 4 Litre with lid | £1.00 |
| 298 | Silver 4 Litre with lid | £1.20 |
| 750 | 10 Litre with lid | £3.00 |
| 755 | Lid for 2/4 Litre | £0.30 |

| Code | Product | Units | Price |
|------|---------|-------|-------|
|------|---------|-------|-------|

Decorations

| | | | |
|-----|---------------|-----|-------|
| 454 | Palms | 100 | £9.99 |
| 455 | Umbrellas | 101 | £6.96 |
| 466 | Italian Flags | 144 | £3.50 |

All ice creams listed here are suitable for vegetarians however please note that some may contain alcohol (a).

All products here are vatable.



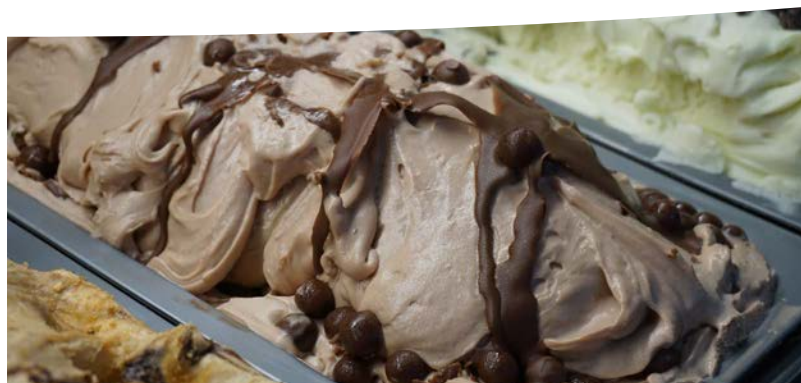


Parlour Range

| Code | Product | Litres | Price | Code | Product | Litres | Price |
|---------------------|--------------------------|--------|--------|------|------------------------|--------|--------|
| Napoli Trays | | | | | | | |
| 400 | Vanilla | 4.5 | £11.55 | 408 | Biscoff | 4.5 | £14.80 |
| 401 | Chocolate | 4.5 | £12.80 | 041 | Iron Brew | 4.5 | £15.15 |
| 402 | Strawberry | 4.5 | £12.80 | 405 | Blue Moon | 4.5 | £15.15 |
| 403 | Raspberry Ripple | 4.5 | £11.75 | 389 | Bubblegum Swirl | 4.5 | £15.15 |
| 394 | Vanilla Chocolate Fudge | 4.5 | £12.85 | 438 | Curly Wurly | 4.5 | £15.15 |
| 412 | Coconut (real coconut) | 4.5 | £13.65 | 435 | Sparkling Cotton Candy | 4.5 | £15.15 |
| 418 | Toffee Crunch | 4.5 | £13.65 | 389 | Fruit Salad | 4.5 | £15.15 |
| 393 | Strawberry Ripple | 4.5 | £13.60 | 392 | Pistachio | 4.5 | £16.35 |
| 420 | Honeycomb | 4.5 | £13.65 | 437 | Nuttella | 4.5 | £14.05 |
| 426 | Vanilla Toffee Ribonette | 4.5 | £13.65 | 431 | Cookie Monster | 4.5 | £15.75 |
| 406 | Chocolate Fudge Brownie | 4.5 | £13.60 | 385 | White Chocolate Twix | 4.5 | £16.30 |
| 380 | Cookies & Cream | 4.5 | £14.00 | 422 | Parma Violet | 4.5 | £16.30 |
| 381 | Dime Bar | 4.5 | £14.00 | 436 | Twix | 4.5 | £16.30 |
| 383 | Kola Cube | 4.5 | £14.00 | 429 | Crollo | 4.5 | £16.30 |
| 384 | White Chocolate | 4.5 | £14.00 | 434 | Salted Caramel | 4.5 | £16.60 |
| 404 | Banoffi | 4.5 | £14.00 | 439 | Maltesers | 4.5 | £16.85 |
| 415 | Blue Bubblegum | 4.5 | £14.00 | 441 | Cherry Mania | 4.5 | £16.85 |
| 417 | Smarty | 4.5 | £14.00 | 480 | Tango Ice Blast R&B | 4.5 | £16.85 |
| 421 | Chocolate Chip | 4.5 | £14.00 | 386 | Chocolate & Peanut | 4.5 | £16.85 |
| 423 | Banana | 4.5 | £14.00 | 396 | Red Velvet | 4.5 | £16.85 |
| 424 | Turkish Delight | 4.5 | £14.00 | 407 | After Dinner Mint | 4.5 | £16.95 |
| 427 | Strawberry Cheesecake | 4.5 | £14.00 | 432 | Ferrero | 4.5 | £16.95 |
| 398 | Krunchie | 4.5 | £14.00 | 428 | Cookie Dough | 4.5 | £16.95 |
| 409 | Mango | 4.5 | £14.00 | 387 | Baileys | 4.5 | £17.40 |
| 410 | Mint Chocolate Chip | 4.5 | £14.00 | 425 | Toffy Crisp | 4.5 | £17.55 |
| 411 | Rum & Raisin (a) | 4.5 | £14.00 | 388 | Cream Egg | 4.5 | £18.35 |
| 390 | Mango & Raspberry | 4.5 | £14.00 | 419 | Popcorn | 4.5 | £18.35 |
| 414 | Tablet (Scottish) | 4.5 | £14.30 | | | | |
| 399 | Caramel Shortcake | 4.5 | £14.30 | | | | |
| 413 | Macaroon | 4.5 | £14.30 | | | | |
| 395 | Kinder | 4.5 | £14.30 | | | | |
| 416 | Toffee Fudge | 4.5 | £14.30 | | | | |

All ice creams listed here are suitable for vegetarians however please note that some may contain alcohol (a).

All ice creams are vatable.





Popular with Parlours

| Code | Product | Units/Kg | Price |
|---------------------|---|----------|--------|
| Waffles | | | |
| 135 | Belgian Waffles | 30 | £12.00 |
| BAK005 | Waffle Mix | 12.5kg | £35.00 |
| 130 | Belgian Sweet Waffles | 20 | £8.30 |
| Puddings | | | |
| sid003 | Chocolate Fudge Brownie (Gluten Free) (v) | 12 | £11.50 |
| ALD02 | Chocolate Fudge Brownie | 30 | £25.60 |
| sid159 | IND Sticky Toffee Pudding (v) | 12 | £12.60 |
| ALD01 | Crollas Fudge Brownie Slab | 108 | £39.50 |
| Cookie Dough | | | |
| Bako02 | Double Chocolate Cookie Pucks | 90 | £POA |
| Bako03 | Milk Chocolate Cookie Pucks | 90 | £POA |
| Bako04 | White Chocolate Cookie Pucks | 90 | £POA |
| Bako06 | Milk Chocolate Cookie Dough (Bucket) | 5kg | £POA |
| Bako07 | Salted Caramel | 90 | £POA |
| JOE01 | Chocolate Orange | 45 | £25.00 |
| JOE02 | Red Velvet | 45 | £25.00 |
| JOE03 | Blue Velvet | 45 | £25.00 |
| JOE04 | Mint Chocolate Chip | 45 | £25.00 |
| JOE05 | Chocolate Fudge | 45 | £23.00 |
| JOE06 | Milk Chocolate | 45 | £24.00 |
| JOE07 | White Chocolate | 45 | £24.00 |
| Churros | | | |
| 141 | Churro Sticks | 2 x 2kg | £10.50 |
| 146 | Chocolate Churros | 1.4kg | £10.99 |
| 147 | Caramel Sticks | 1.4kg | £10.99 |
| 149 | Ringed Churros (Garcia) | 5kg | £35.50 |
| 148 | Plain Churros with Cinammon | 1kg | £10.00 |

Items marked (v) are suitable for vegetarians.
All products here are non-vatable.





Tubs & Packaging *

| Code | Product | Units | Price |
|----------------------|---------------------------------|-------|---------|
| Tubs | | | |
| 794 | 8B 100ml Waxed Fruit Cup | 100 | £6.90 |
| 793 | 10MG 160ml Waxed Fruit Cup | 100 | £8.50 |
| 789 | M2 230ml Waxed Fruit Cup | 100 | £8.60 |
| 798 | M3 260ml Waxed Fruit Cup | 100 | £9.99 |
| 781 | M4 500ml Waxed Fruit Cup | 100 | £14.00 |
| 226 | High Ball Containers | 80 | £3.60 |
| 281 | Carton F 177 | 100 | £2.15 |
| 763 | Carton F 195 | 100 | £7.30 |
| 760 | Carton F 250 | 100 | £9.00 |
| 761 | Carton F 365 | 100 | £9.15 |
| 764 | Carton F 470 | 100 | £11.25 |
| 293 | Containers 1 Lt/Lids | 252 | £137.50 |
| 294 | Containers 1/2 Lt/Lids 100 only | 100 | £30.00 |
| 565 | 8oz Cups clear | 100 | £2.20 |
| Lids for Tubs | | | |
| 799 | Lid for 8B 100ml | 100 | £3.50 |
| 796 | Lid for 10mg 160ml | 100 | £6.10 |
| 797 | Lid for M2/M3 230/260ml | 100 | £6.10 |
| 780 | Lid or M4 500ml | 100 | £7.75 |
| 299 | Lid for F Cartons | 100 | £4.80 |
| Packaging | | | |
| 270 | Greaseproof Paper Small | Pack | £7.00 |
| 271 | Greaseproof Paper Large | Pack | £7.00 |
| Franc115 | Pink Sweet Box (7") | 90 | £POA |
| Spoons | | | |
| 269 | Spoons Small | 1kg | £5.70 |
| 289 | Large Sundae Spoons | 1kg | £6.80 |

Cones & Wafers

| Code | Product | Units | Price |
|---------------------------------|------------------------------|-------|--------|
| Traditional Cones | | | |
| 214 | Teddy Bear Cones | 175 | £10.99 |
| 197 | Carousel Medium Flat Top | 420 | £11.30 |
| 253 | Cones Twin Top | 189 | £11.65 |
| 252 | Cones Giant Red Fiesta | 360 | £15.00 |
| 249 | Tip Top Medium Green | 432 | £14.29 |
| Waffle Cones | | | |
| WAV03 | Small Waffle Cone | 234 | £30.99 |
| WAV01 | Medium Waffle Cone | 195 | £35.95 |
| WAV06 | Large Waffle Cones | 128 | £40.45 |
| WAV05 | Marcantonio Tall Waffle Cone | 200 | £36.40 |
| Chocolate Dipped Cones * | | | |
| cat16 | Sprinkled Waffle Cone | 90 | £41.00 |
| cater08 | Bubblegum Waffle Cone | 56 | £25.00 |
| WAV02 | Small Chocolate Waffle Cone | 132 | £35.95 |
| WAV04 | Medium Chocolate Waffle Cone | 110 | £42.00 |
| WAV07 | Tall Chocolate Waffle Cone | 168 | £55.60 |
| CAT09 | Salted Caramel Dipped Cones | 90 | £41.00 |
| Wafers | | | |
| 250 | Ice Wafers | 650 | £12.50 |
| 255 | Fan Wafers Florentine | 400 | £16.75 |
| 248 | Teddy Bear Wafers | 400 | £20.25 |
| ROSSI | Rossini Curls | 280 | £19.60 |
| 256 | Nougat | 60 | £16.30 |
| 258 | Oysters | 36 | £13.10 |
| 242 | Retail Oysters | 6 | £2.00 |
| 234 | Waffle Baskets | 74 | £26.90 |

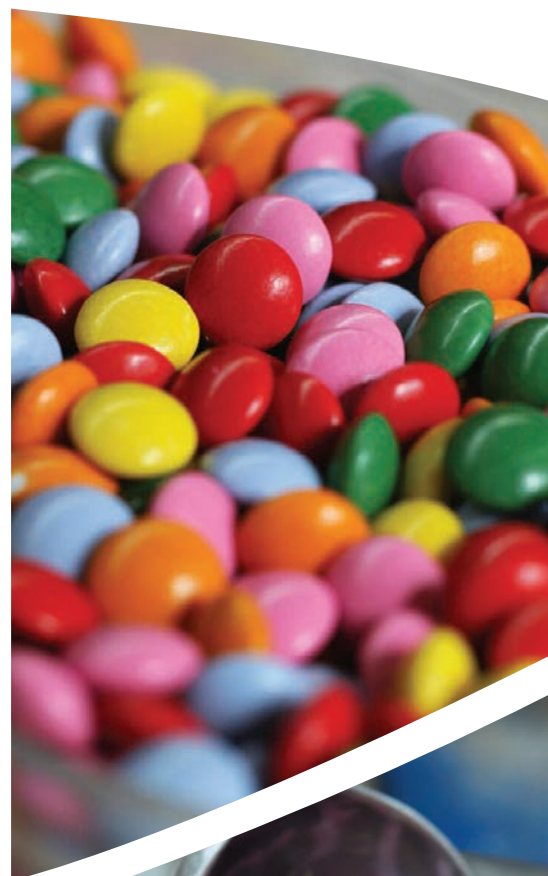


Toppings

| Code | Product | Units/Kg | Price |
|------|----------------------------------|----------|--------|
| 243 | Milk Chocolate Buttons | 5kg | £19.50 |
| 241 | Coloured Sugar Strands | 1kg | £4.80 |
| 260 | Light Vermicelli | 1kg | £4.90 |
| 257 | Smarties * | 3kg | £16.00 |
| 467 | Tablet Squares | 1kg | £6.00 |
| 450 | Nibbed Nuts (Peanuts) * | 1kg | £11.99 |
| 440 | Honeycomb Pieces * | 1kg | £6.50 |
| 272 | Snowballs Tunnocks | 36 | £6.30 |
| 273 | Real Chocolate Chips | 1kg | £6.70 |
| 479 | Mini Marshmallows (pink + white) | 1kg | £6.00 |
| 477 | Micro Marshmallows | 1kg | £6.00 |
| 1030 | Chocolate Shavings (MILK) | 3kg | £23.00 |
| 1031 | Dark Chocolate Shavings | 3kg | £23.00 |
| 443 | Fudge Pieces * | 1kg | £10.85 |
| 452 | Toffee Pieces * | 1kg | £10.00 |
| 189 | Mini Meringues * | 1kg | £11.50 |
| HB25 | White Blossom Curls * | 1kg | £9.40 |
| HB26 | Milk Chocolate Curls * | 1kg | £9.40 |
| HB41 | Caramel Curls * | 1kg | £12.90 |
| 233 | Mini Smarties * | 2.5kg | £21.00 |
| 464 | Oreo Pieces | 1kg | £11.90 |
| 275 | Lessiters Chocolate Flakes * | 140 | £13.00 |
| 254 | Fudgery Do Fingers * | 144 | £20.75 |
| HB12 | White Chocolate Shavings | 3kg | £23.50 |

All products listed here are suitable for vegetarians.

All products marked * are vatable.





Sauces

| Code | Product | Units | Price |
|-------|--------------------------|-------|--------|
| 196 | Bubblegum Topping Syrup | 625g | £1.85 |
| 262 | Toffee Topping Syrup | 625g | £1.85 |
| 263 | Chocolate Topping Syrup | 625g | £1.85 |
| 264 | Strawberry Topping Syrup | 625g | £1.85 |
| 265 | Raspberry Topping Syrup | 625g | £1.85 |
| 267 | Lime Topping Syrup | 625g | £1.85 |
| 199 | Maple Syrup | 1kg | £6.95 |
| 247 | Raspberry Syrup | 12 | £11.95 |
| NIC07 | Sparkling Unicorn | 500g | £5.35 |
| NIC08 | Cookie Dough | 500g | £5.35 |
| NIC09 | Lemon Curd | 500g | £5.35 |

Joy Gelato

| Code | Product | Units | Price |
|--------|--------------------------------|-------|--------|
| HB02 | Joy Caramel Topping Sauce | 1kg | £7.70 |
| HB03 | Joy Chocolate Topping Sauce | 1kg | £7.70 |
| HB04 | Joy Strawberry Topping Sauce | 1kg | £7.70 |
| HB06 | Joy Tropical Topping Sauce | 1kg | £7.70 |
| HB14 | Joy Mango Topping Sauce | 1kg | £7.70 |
| HB15 | Joy Raspberry Topping Sauce | 1kg | £7.70 |
| HB24 | Joy White Topping Sauce | 1kg | £8.20 |
| HB42 | Joy Nocciolata Bianco (Kinder) | 1kg | £9.70 |
| FRAN44 | Fab Mint Topping Sauce | 1kg | £12.25 |
| marc05 | Hot Chocolate Fudge Sauce | 3kg | £21.00 |
| Fran08 | Noccialatta Ice | 5kg | £36.90 |

Cherries

| Code | Product | Kg | Price |
|--------|-------------------------|-----|--------|
| Tosc08 | Toschi Amarena Cherries | 1kg | £10.33 |

6kg Range

| Code | Product | Kg | Price |
|------|------------------------|-----|--------|
| 444 | Toffee Sauce | 6kg | £11.80 |
| 447 | Raspberry Sauce | 6kg | £11.80 |
| 448 | Bubblegum Sauce | 6kg | £11.80 |
| 449 | Strawberry Sauce | 6kg | £11.80 |
| 459 | Chocolate Sauce | 6kg | £11.80 |
| 268 | Raspberry Syrup (Real) | 6kg | £11.80 |

NIC

| Code | Product | Kg | Price |
|-------|--------------------------|-------|-------|
| NIC03 | Nic Toffee Sauce | 1.2kg | £7.40 |
| NIC04 | Nic Salted Caramel Sauce | 1.2kg | £8.40 |

Slush

| Code | Product | Units | Price |
|--------|---------------------------|-------|--------|
| Simp06 | Crolla's Iron Brew Slush | 5lt | £14.20 |
| Simp07 | Crolla's Dark Cola Slush | 5lt | £14.20 |
| Simp08 | Crolla's Energy Slush | 5lt | £15.50 |
| Simp43 | Crolla's Purple Grape | 5lt | £14.20 |
| Simp73 | Crolla's Green Sour Apple | 5lt | £14.20 |
| Simp76 | Crolla's Red Strawberry | 5lt | £14.20 |
| Simp77 | Crolla's Blue Raspberry | 5lt | £14.20 |
| Simp78 | Crolla's Kola Cube | 5lt | £14.20 |
| Simp79 | Crolla's Pink Bubblegum | 5lt | £14.20 |
| Simp57 | Slush Base Mix | 5lt | £14.20 |

Scoops & Utensils *

| Code | Product | Price |
|------|-------------------------------|--------|
| 295 | Size 20 Ice Cream Scoops | £25.00 |
| 296 | Size 30 Ice Cream Scoops | £25.00 |
| 301 | Eutectic Scoop Size 20 | £19.00 |
| 302 | Eutectic Scoop Size 30 | £19.00 |
| 303 | Plastic Handled Size 20 scoop | £23.00 |
| 304 | Plastic Handled Size 30 scoop | £23.00 |
| 287 | Ice Cream Spatula | £9.00 |
| 527 | Ice Cream Spatula Small | £5.50 |
| 555 | Sterilising powder | £6.30 |





Milkshake

| Code | Product | Units | Price |
|--------|-----------------------|-------|--------|
| Tosc01 | Banana Milk Shake | 1ltr | £11.20 |
| Tosc02 | Chocolate Milk Shake | 1ltr | £11.20 |
| Tosc03 | Coconut Milk Shake | 1ltr | £11.20 |
| Tosc04 | Hazelnut Milk Shake | 1ltr | £11.20 |
| Tosc05 | Mango Milk Shake | 1ltr | £11.20 |
| Tosc06 | Mint Milk Shake | 1ltr | £11.20 |
| Tosc10 | Raspberry Milk Shake | 1ltr | £11.20 |
| Tosc11 | Strawberry Milk Shake | 1ltr | £11.20 |
| Tosc12 | Vanilla Milk Shake | 1ltr | £11.20 |
| Tosc15 | Caramel Milk Shake | 1ltr | £11.20 |

Cups & Straws *

| Code | Product | Units | Price |
|---------|------------------------------------|-------|-------|
| 471 | Clear Milk Shake Straws | 200 | £3.36 |
| Solo12 | 12oz Clear Cup | 50 | £3.99 |
| Solo16 | 16oz Clear Cup | 50 | £3.70 |
| Solo12D | Lids for 12oz dome | 100 | £3.50 |
| Solo16D | Lids for 16oz dome | 100 | £3.75 |
| 569 | Clear 20floz Pint Tumblers (568ml) | 50 | £4.85 |

New Cone Dispensers

| | |
|-------|---------|
| Small | £95.00 |
| Large | £115.00 |





Specialty Ice Creams

Freezer to table

Simplicity. Just straight from the freezer to your customer's table.



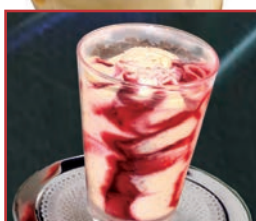
Code: 093
Chocolate Sundaes
10 Units £9.30
Ind. Price £0.93



Code: 095
Strawberry Sundaes
10 Units £9.30
Ind. Price £0.93



Code: 076
Caprizzo Bianco
12 Units £12.70
Ind. Price £1.06



Code: 118
Strawberry Cheesecake
8 Units £10.55
Ind. Price £1.32



Code: 066
White Chocolate/ Caramel Truffle
8 Units £10.56
Ind. Price £1.32



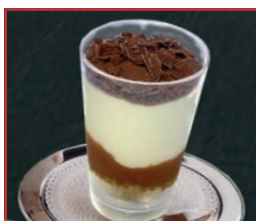
Code: 074
Tartufo Chocolate
12 Units £15.35
Ind. Price £1.28



Code: 075
Tartufo Mint
12 Units £15.35
Ind. Price £1.28



Code: 117
After Dinner Mint
8 Units £11.55
Ind. Price £1.44



Code: 115
Caramel Shortcake
8 Units £12.20
Ind. Price £1.53



Code: 714
Semifreddo Torroncino
12 Units £18.50
Ind. Price £1.54



Code: 108
Coconut Surprise
8 Units £13.50
Ind. Price £1.66



Code: 690
Panna Cotta
12 Units £16.45
Ind. Price £1.37



Code: 641
Fantastica
6 Units £9.75
Ind. Price £1.63



Code: 731
Cassata Bindi
16 Units £26.35
Ind. Price £1.65



Code: 092
Tiramisu Cup
8 Units £13.75
Ind. Price £1.72



Code: 102
Limoncello Flute
 8 Units £13.90
 Ind. Price £1.74



Code: 103
Salted Caramel Flute
 8 Units £13.90
 Ind. Price £1.74



Code: 712
Tartufo Limoncello
 12 Units £21.00
 Ind. Price £1.75



Code: 734
Tartufo Classico
 12 Units £21.00
 Ind. Price £1.75



Code: 081
Coppa Mango
 8 Units £14.50
 Ind. Price £1.81



Code: 088
Toffee Twilight (Glass)
 8 Units £14.50
 Ind. Price £1.81



Code: 089
Strawberry Flute (Glass)
 8 Units £14.50
 Ind. Price £1.81



Code: 056
Coppa Fruta Del Bosque
 8 Units £14.50
 Ind. Price £1.81



Code: 644
Cookies & Cream
 8 Units £16.45
 Ind. Price £2.06



Code: 059
Coppa Chocolate Mousse
 6 Units £12.50
 Ind. Price £2.08



Code: 096
Snowflake
 8 Units £17.20
 Ind. Price £2.15



Code: 097
Ferrero Rochella (Glass)
 8 Units £17.20
 Ind. Price £2.15



Code: 112
Honey Pot
 6 Units £12.95
 Ind. Price £2.16

Ask a member of our team about our free dessert menus.



All products listed here are vatable.



Real Fruit Skins



Code: 100
Orange Givres
(Skins)

6 Units £9.40
Ind. Price £1.57



Code: 101
Lemon Givres
(Skins)

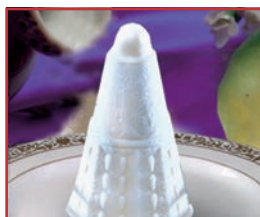
6 Units £9.40
Ind. Price £1.57



Code: 109
Coconut Shells

8 Units £15.75
Ind. Price £1.97

Indian Desserts



Code: 080
Malai Kulfi

12 Units £10.20
Ind. Price £0.85



Code: 083
Mango Kulfi

12 Units £10.20
Ind. Price £0.85



Code: 084
Pistachio Kulfi

12 Units £10.20
Ind. Price £0.85

Childrens' Desserts



Code: 638
Punky

12 Units £15.25
Ind. Price £1.27



Code: 639
Kuaky (Chocolate)

12 Units £16.40
Ind. Price £1.37



Code: 636
Vacky

12 Units £16.40
Ind. Price £1.37



Code: 637
Friky (Strawberry)

12 Units £16.40
Ind. Price £1.37



Code: 645
Leo the Lion

12 Units £17.75
Ind. Price £1.48

All products listed here are vatable.





Cakes & Desserts

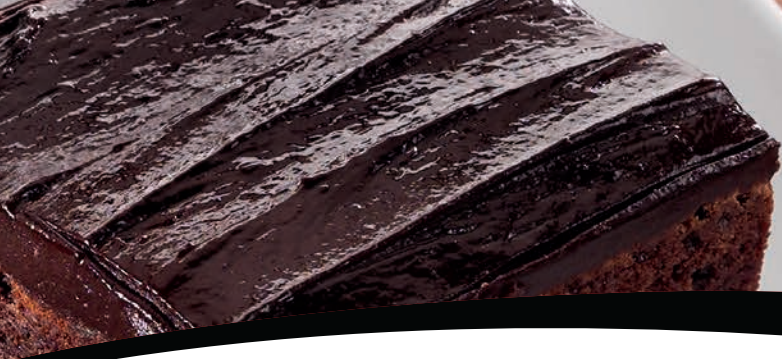
Gateaux and Pies

| Code | Product | Portions | Price |
|--------|-----------------------------|----------|--------|
| Copp05 | Almond cream Cake | 12 | £6.25 |
| 138 | Apple Crumble (v) | 14 | £6.75 |
| 184 | Chocolate Fudge Gateau (v) | 18 | £7.15 |
| 185 | Double Chocolate Gateau (v) | 18 | £7.15 |
| 186 | Banoffee Gateau (v) | 18 | £7.85 |
| 131 | Black Forest Torte | 16 | £6.90 |
| 132 | Peach Melba Torte | 16 | £6.90 |
| 133 | Chocolate Cream Torte (v) | 16 | £6.90 |
| 183 | Apple Pie | 14 | £11.95 |
| 160 | Lemon Mallow Pie | 14 | £10.75 |
| sid662 | Caramel Granny Apple (v) | 12 | £13.45 |
| 142 | Chocolate Fudge Cake (v) | 16 | £16.45 |
| sid152 | Carrot Cake (v) | 14 | £18.00 |
| sid177 | Dime Bar Cake | 14 | £18.50 |
| 145 | Red Velvet Fudge Cake | 12 | £19.95 |
| 684 | Tiramisu Tondo | 12 | £15.85 |
| 154 | Red Velvet Chocolate Cake | 14 | £17.50 |
| HILL01 | Black Forest Gateau | 16 | £7.40 |

Tray Bakes & Pudding

| Code | Product | Units | Price |
|--------|-------------------------------------|-------|--------|
| 310 | Crolla Caramel Shortcake Squares | 12 | £5.85 |
| 311 | White Chocolate Caramel Squares | 12 | £5.85 |
| sid003 | Gluten Free Chocolate Brownie (v) | 12 | £13.60 |
| 744 | Profiterole Scuro Bianco | 12 | £12.00 |
| 747 | Profiterole Scuro | 12 | £12.00 |
| SID159 | Sticky Toffee Pudding (v) | 12 | £13.20 |
| 158 | Sticky Toffee Squares (v) | 16 | £14.95 |
| ALD02 | Chocolate Fudge Brownie | 30 | £25.60 |
| ALD01 | Crolla Chocolate Fudge Brownie Slab | 108 | £39.50 |
| 191 | Vanilla Slices | 24 | £15.40 |
| 683 | Tiramisu Dish | 12 | £13.20 |





Cheesecake

| Code | Product | Portions | Price |
|--------|------------------------------------|----------|--------|
| Copp10 | Mandarin Cheesecake | 14 | £6.85 |
| Copp11 | Copp Strawberry Cheesecake | 14 | £6.85 |
| SID176 | New York Cheesecake (gf) (v) | 12 | £16.95 |
| sid012 | Cookies & Cream cheesecake pie (v) | 14 | £17.99 |
| 151 | Belgian Chocolate Cheesecake | 14 | £18.55 |

| Code | Product | Portions | Price |
|--------|---|----------|--------|
| 154 | Red Velvet Cheesecake | 14 | £18.55 |
| 153 | Millionaires Cheesecake | 14 | £17.55 |
| Copp05 | Almond Cream Cheesecake | 12 | £6.25 |
| Copp04 | Vanilla Cheesecake | 12 | £6.25 |
| WIN32 | White Chocolate & Strawberry Cheesecake | 16 | £18.99 |
| sid016 | Banoffee Cookie Cheesecake | 14 | £21.35 |

All products marked (v) are suitable for vegetarians.

All products marked (gf) are gluten free.

All products are VAT free.





Buffet Range

| Code | Product | Portions | Price |
|--------|------------------------------|----------|--------|
| 124 | Mini Vanilla Rolls | box | £2.10 |
| 138 | Apple Crumble (v) | 14 | £6.75 |
| Copp10 | Mandarin Cheesecake | 14 | £6.85 |
| Copp11 | Strawberry Cheesecake | 14 | £6.85 |
| 184 | Chocolate Fudge Gateau (v) | 18 | £7.32 |
| 185 | Double Chocolate Gateau (v) | 18 | £7.32 |
| 186 | Banoffee Gateau (v) | 18 | £8.10 |
| 131 | Black Forest Torte | 16 | £6.90 |
| 132 | Peach Melba Torte | 16 | £6.90 |
| 133 | Chocolate Cream Torte (v) | 16 | £6.90 |
| HILL02 | Profiteroles with choc sauce | 5x374G | £16.99 |
| HILL01 | Black Forest Gateau | 16 | £7.44 |



All products here are non-vatable.





Bulk Ice Cream Range

| Code | Product | Litres | Price |
|------------------------|--|--------|--------|
| Dairy Bulk | | | |
| 354 | 10.0 Litre (Dairy Ice Cream) (v) | 10 | £23.40 |
| 351 | 13 Ltrs (Dairy Ice Cream) (3.5gal) (v) | 16 | £30.40 |
| Half Dairy Bulk | | | |
| 809 | 13 Litre (Half Dairy Ice Cream) (v) | 13 | £20.70 |
| 801 | 22.75 Lt (Half Dairy Ice Cream) (v) | 22.75 | £36.25 |
| 10 Litre | | | |
| 357 | Vanilla (Half Dairy Ice Cream) (v) | 10 | £15.95 |
| 931 | Strawberry (Half Dairy Ice Cream) (v) | 10 | £17.50 |
| 932 | Chocolate (Half Dairy Ice Cream) (v) | 10 | £17.50 |
| 933 | Toffee (Half Dairy Ice Cream) (v) | 10 | £17.50 |
| 935 | Raspberry Ripple (Half Dairy Ice Cream) (v) | 10 | £17.50 |
| 936 | Blue Bubblegum (Half Dairy Ice Cream) (v) | 10 | £17.50 |
| 940 | Banana (Half Dairy Ice Cream) (v) | 10 | £18.85 |
| 937 | Caramel Shortcake (Half Dairy Ice Cream) (v) | 10 | £20.20 |
| 938 | Iron Brew (Half Dairy Ice Cream) (v) | 10 | £20.20 |
| 930 | Mint Chip (Half Dairy Ice Cream) (v) | 10 | £20.20 |
| 934 | Honeycomb (Half Dairy Ice Cream) (v) | 10 | £20.20 |

All products marked (v) are suitable for vegetarians.

All products here are vatable.



Fresh Crolla Mix & Long Life Mix

| Code | Product | Litres | Price |
|----------------------|-------------------------------|--------|--------|
| Fresh | | | |
| 600 | Mix Dairy Store from 1C to 6C | 4.55 | £11.30 |
| Non Dairy UHT | | | |
| 711 | Mr Sunshine Creamy UHT Mix | 12x1lt | £POA |

| Code | Product | Litres | Price |
|-----------------------|-------------------------------|--------|-------|
| Cafe Dairy UHT | | | |
| 612 | 1 Litres Crolla Dairy UHT Mix | 12x1lt | £POA |
| 650 | 5 Litre Crolla Dairy UHT Mix | 1x5lt | £POA |
| 651 | 10 Litre Crolla Dairy UHT Mix | 1x10lt | £POA |

Retail Range

| Code | Product | Case | Ind. Cost | RRP |
|-------------------------|------------------------|----------|-----------|-------|
| Spoon in the Lid | | | | |
| 374 | Vanilla | 12x120ml | £0.70 | £1.25 |
| | | £8.45 | | |
| 375 | Mint Choc Chip | 12x120ml | £0.70 | £1.25 |
| | | £8.45 | | |
| 378 | Raspberry Ripple | 12x120ml | £0.70 | £1.25 |
| | | £8.45 | | |
| 379 | Choc Fudge Ripple | 12x120ml | £0.70 | £1.25 |
| | | £8.45 | | |
| 353 | Cheeky Monkey | 12x120ml | £0.70 | £1.25 |
| | | £8.45 | | |
| 355 | Caramel Shortcake | 12x120ml | £0.70 | £1.25 |
| | | £8.45 | | |
| 356 | Strawberry Cheesecake | 12x120ml | £0.70 | £1.25 |
| | | £8.45 | | |
| 500ml | | | | |
| 370 | Vanilla Dairy | 6x500ml | | |
| | | £10.10 | £2.95 | |
| 371 | Raspberry/Ripple Dairy | 6x500ml | | |
| | | £11.35 | £1.89 | £3.30 |

| Code | Product | Case Cost | Ind. | RRP |
|------------------------|----------------------------|-----------|-------|-------|
| 500ml continued | | | | |
| 366 | Tablet (Scottish) | 6x500ml | | |
| | | £11.35 | £1.89 | £3.30 |
| 367 | Sticky Toffee Ripple | 6x500ml | | |
| | | £11.35 | £1.89 | £3.30 |
| 368 | Strawberry Ripple | 6x500ml | | |
| | | £11.35 | £1.89 | £3.30 |
| 369 | Chocolate Fudge Ripple | 6x500ml | | |
| | | £11.35 | £1.89 | £3.30 |
| 832 | Mint Chocolate Chip | 6x500ml | | |
| | | £11.35 | £1.89 | £3.30 |
| 833 | Cookies & Cream | 6x500ml | | |
| | | £11.35 | £1.89 | £3.30 |
| 834 | Cheeky Monkey Tall | 6x500ml | | |
| | | £11.35 | £1.89 | £3.30 |
| 835 | Strawberry Cheesecake Tall | 6x500ml | | |
| | | £11.35 | £1.89 | £3.30 |





| Code | Product | Case | Ind. Cost | RRP |
|----------------------------|--------------------------------|----------|-----------|-------------|
| Jimmy Gelato Retail | | | | |
| 510 | Jimmy Gelato 1/2 Lt Vanilla | 6x500ml | £7.00 | £1.17 £2.00 |
| 511 | Jimmy Gelato 1/2 Lt Ras/Ripple | 6x500ml | £7.00 | £1.17 £2.00 |
| 500 | Jimmy Gelato 1 Lt Vanilla | 3x1lt | £5.30 | £1.77 £2.75 |
| 501 | Jimmy Gelato 1 Lt Rasp/Ripple | 3x1lt | £5.30 | £1.70 £2.75 |
| 526 | J.G. Strawberry Smoothie | 10 units | £7.85 | £0.99 £1.35 |

Traditional Vanilla

| | | | | |
|-----|----------------------------|------------|--------|-------------|
| 373 | Kiddicups (110ml) Vanilla | 24x110ml | £11.30 | £0.47 £0.85 |
| 372 | Vanilla 238ml Dairy | 12x238ml | £11.25 | £0.94 £1.60 |
| 362 | Vanilla 1 Litre Dairy | 3x 1 litre | £8.25 | £2.75 £4.50 |
| 361 | Vanilla 2 Litre Dairy Bulk | 1x2 litre | £5.45 | |

| Code | Product | Unit | Price |
|--------------------|-------------------------|------|-------|
| Ice Lollies | | | |
| 336 | Super Cola Ice Lolly | box | £POA |
| 337 | Fizzy Lemonade | box | £POA |
| 339 | Bubble Gum Lolly | box | £POA |
| 342 | KBG Bubblegum | box | £POA |
| 343 | Stella Strawberry Split | box | £POA |
| 347 | KBG Chocolate | box | £POA |
| 348 | KBG Strawberry | box | £POA |
| 349 | Chicco Clown Push up | box | £POA |
| 350 | Orange Juice Bar | box | £POA |
| 340 | Wazzaaa | box | £POA |

All products are suitable for vegetarians.

All products here are vatable.





Terms of Business

The published prices are correct at the time of printing but may alter without notice. VAT will be charged at the standard rate where applicable.

PAYMENT

All products are sold as cash on delivery unless a credit agreement has been established. Credit terms are monthly. Failure to comply with these terms could result in no further deliveries and, in extreme cases, legal action.

ORDERS

Within our delivery catchment area there will be no minimum order required for delivery. However if you require a delivery outwith our delivery area a minimum order may be applicable. (Please call to find out our delivery areas).

DAMAGES AND SHORTAGES

Any damages or shortages must be notified to us within 24 hours of delivery. Please note that Credits or replacements will not be given until our Quality Control Department has inspected the returned goods.

AVAILABILITY

All products are subject to availability. Although we stock everything that is on this price list sometimes circumstances beyond our control may cause shortages.

The Crolla Ice Cream Company Ltd

Address: 48 Jessie Street
Polmadie, Glasgow
G42 0PG
Telephone: 0141 423 1161
Fax: 0141 423 2596
Email: sales@crollaicecream.co.uk
Website: www.crollaicecream.co.uk

If you have any dietary requirements or concerns regarding allergens, please do not hesitate to ask a member of our team.







CrollaIceCream.co.uk