



# PRODUCT GUIDE 2019



[CrollaIceCream.co.uk](http://CrollaIceCream.co.uk)





# Contents

Catering Range	1
Parlour Range	3
Speciality Ice Creams	9
Cakes & Desserts	10
Buffet Range	15
Bulk Ice Cream Range	16
Fresh Crolla Mix & Long Life Mix	17
Retail Range	17
Terms of Business	19

## Ordering Information

### TO ORDER

Contact our Sales Team on **0141 423 1161**.

A member of our Sales Team will be available to answer your call during opening hours. Additionally, for your convenience, we also have an answering service outwith these hours.

Orders can also be placed by emailing [orders@crollaicecream.co.uk](mailto:orders@crollaicecream.co.uk)

Our Factory is open for collections during our opening hours, should you not wish to phone in an order and book a delivery. (We are open to the public and business accounts are not required for collections).

### OPENING HOURS

Monday - Friday: 8.00am - 5pm  
Saturday: 8.00am - 12pm  
Sunday: Closed

If you wish to contact our Sales Manager email [john.morrison@crollaicecream.co.uk](mailto:john.morrison@crollaicecream.co.uk) or [peter@crollas.com](mailto:peter@crollas.com)

### NUT ALLERGY ADVICE

Our products are made in a factory that also handles nuts.





# The Crolla Ice Cream Company

Crolla's have been making traditional Italian ice cream in Glasgow for over a hundred years. It was 1895 when a young Serafino Crolla exchanged the warm sunshine of southern Italy for the less predictable climes of Scotland, setting up his first shop in Queen Mary Street, Glasgow.

His son Giuseppe opened a second shop in Clydebank, and after World War I he returned to Scotland and opened the Premier Cafe in Main Street, Bridgeton (shown opposite). This was followed by expansion into the two adjoining premises.

By 1950 the family had started up an ice cream factory and had 30 vans selling their delicious ice cream around the streets of Glasgow.

Today the firm still supplies ice cream vans, but has expanded to supply shops, cafes, wholesalers, restaurants and hotels. Although as firmly committed as ever to producing top quality ice cream, a look through this brochure gives some idea of the range of products Crolla's now supplies.

Peter Crolla, Serafino's greatgrandson, has now established the fourth generation of Crollas - a family firm in the true sense of the word. With their commitment to quality ingredients and their secret family recipes we are sure you will agree the difference between Crolla's ice cream and the rest is **'in the taste'**.





# Catering Range

Code	Product	Litres	Price
<b>Soft Serve</b>			
001	Vanilla	4	£8.60
002	Chocolate	4	£9.85
003	Strawberry	4	£9.85
004	Raspberry Ripple	4	£9.85
025	Cookies Cream	4	£10.75
027	Horchata	4	£10.50
007	Caramel Shortcake	4	£10.50
008	Mango	4	£10.50
009	Toffee Crunch	4	£10.50
014	Coconut	4	£10.50
015	Honeycomb	4	£10.50
024	Tablet (Scottish)	4	£10.55
018	Dime Bar	4	£10.65
045	Salted Caramel	4	£10.65
011	Rum & Raisin (a)	4	£11.15
017	Mango & Raspberry	4	£11.15
006	Banana	4	£11.15
043	Jaffa Cake	4	£11.15
028	Turkish Delight	4	£11.60
029	Kinder	4	£11.60
016	Mint Chocolate Chip	4	£11.60
013	Chilli Chocolate Chip	4	£11.65
020	Pistachio	4	£11.90
010	Iron Brew	4	£11.99
050	Honey	4	£12.65
051	Yoghurt	4	£12.65
047	Nuttella	4	£13.30
019	After Dinner Mint	4	£13.70
022	Nocciola (Hazelnut)	4	£13.80
023	Ferrero	4	£13.80

Code	Product	Litres	Price
<b>Jimmy Gelato (Half Dairy)</b>			
520	Vanilla	4	£5.90
521	Chocolate	4	£6.60
522	Strawberry	4	£6.60
523	Mint Chocolate Chip	4	£7.35
026	Blue Bubblegum	4	£8.99

Code	Product	Litres	Price
<b>Sorbet</b>			
032	Strawberry	2	£6.35
035	Forest Fruit (inc Blackcurrant)	2	£6.50
060	Pomegranate	2	£8.25
036	Champagne	2	£8.45
061	Passion Fruit	2.5	£8.15
062	Lemon	2.5	£8.15
063	Orange	2.5	£8.15
064	Raspberry	2.5	£8.15
065	Mango	2.5	£8.15
039	Lemon Sorbet	4	£11.35
042	Orange Sorbet	4	£11.35
054	Tango Ice Blast	4	£12.80

Code	Product	Price (each)
<b>Containers</b>		
757	2 Litre	£0.45
756	4 Litre	£0.69
292	2 Litre with lid	£0.72
291	4 Litre with lid	£0.92
298	Silver 4 Litre with lid	£1.10
750	10 Litre with lid	£3.00
791	Round 16 Litres	£6.95
790	Round 20 Litres	£8.45
792	Round 25 litres	£8.75
755	Lid for 2/4 Litre	£0.30

Code	Product	Units	Price
<b>Decorations</b>			
454	Palms	100	£10.20
455	Umbrellas	101	£4.90
466	Italian Flags	144	£3.10

All ice creams listed here are suitable for vegetarians however please note that some may contain alcohol (a).

All products here are vatable.









# Parlour Range

Code	Product	Litres	Price	Code	Product	Litres	Price
<b>Napoli Trays</b>							
400	Vanilla	4.5	£10.15	417	Smarty	4.5	£12.30
401	Chocolate	4.5	£11.22	421	Chocolate Chip	4.5	£12.30
402	Strawberry	4.5	£11.22	423	Banana	4.5	£12.30
403	Raspberry Ripple	4.5	£11.22	424	Turkish Delight	4.5	£12.30
394	Vanilla Chocolate Fudge	4.5	£11.25	427	Strawberry Cheesecake	4.5	£12.30
412	Coconut (real coconut)	4.5	£11.99	398	Krunchie	4.5	£12.30
418	Toffee Crunch	4.5	£11.99	409	Mango	4.5	£12.30
393	Strawberry Ripple	4.5	£11.99	410	Mint Chocolate Chip	4.5	£12.30
422	Parma Violet	4.5	£14.35	411	Rum & Raisin (a)	4.5	£12.30
420	Honeycomb	4.5	£11.99	390	Mango & Raspberry	4.5	£12.30
426	Vanilla Toffee Ribonette	4.5	£11.99	397	Peach Melba	4.5	£12.35
406	Chocolate Fudge Brownie	4.5	£11.99	414	Tablet (Scottish)	4.5	£12.55
380	Cookie's & Cream	4.5	£12.30	399	Caramel Shortcake	4.5	£12.55
381	Dime Bar	4.5	£12.30	436	Twix	4.5	£14.35
383	Kola Cube	4.5	£12.30	434	Salted Caramel	4.5	£14.55
384	White Chocolate	4.5	£12.55	439	Maltesers	4.5	£14.80
413	Macaroon	4.5	£12.55	441	Cherry Mania	4.5	£14.80
395	Kinder	4.5	£12.60	480	Tango Ice Blast R&B	4.5	£14.80
416	Toffee Fudge	4.5	£12.60	386	Chocolate & Peanut	4.5	£14.80
433	Jaffa Cake	4.5	£12.60	396	Red Velvet	4.5	£14.80
419	Watermelon	4.5	£12.99	407	After Dinner Mint	4.5	£14.90
041	Iron Brew	4.5	£13.30	432	Ferrero	4.5	£14.90
405	Blue Moon	4.5	£13.30	428	Cookie Dough	4.5	£14.90
389	Bubblegum Swirl	4.5	£13.30	387	Baileys (a)	4.5	£15.30
438	Curly Wurly	4.5	£13.30	425	Toffy Crisp	4.5	£15.40
435	Sparkling Cotton Candy	4.5	£13.30	388	Cream Egg	4.5	£15.99
429	Crollo	4.5	£14.35	389	Fruit Salad	4.5	£13.00
392	Pistachio	4.5	£13.40				
437	Nuttella	4.5	£13.45				
431	Cookie Monster	4.5	£13.85				
404	Banoffi	4.5	£12.30				
415	Blue Bubblegum	4.5	£12.30				

All ice creams listed here are suitable for vegetarians however please note that some may contain alcohol (a).

All ice creams are vatable.



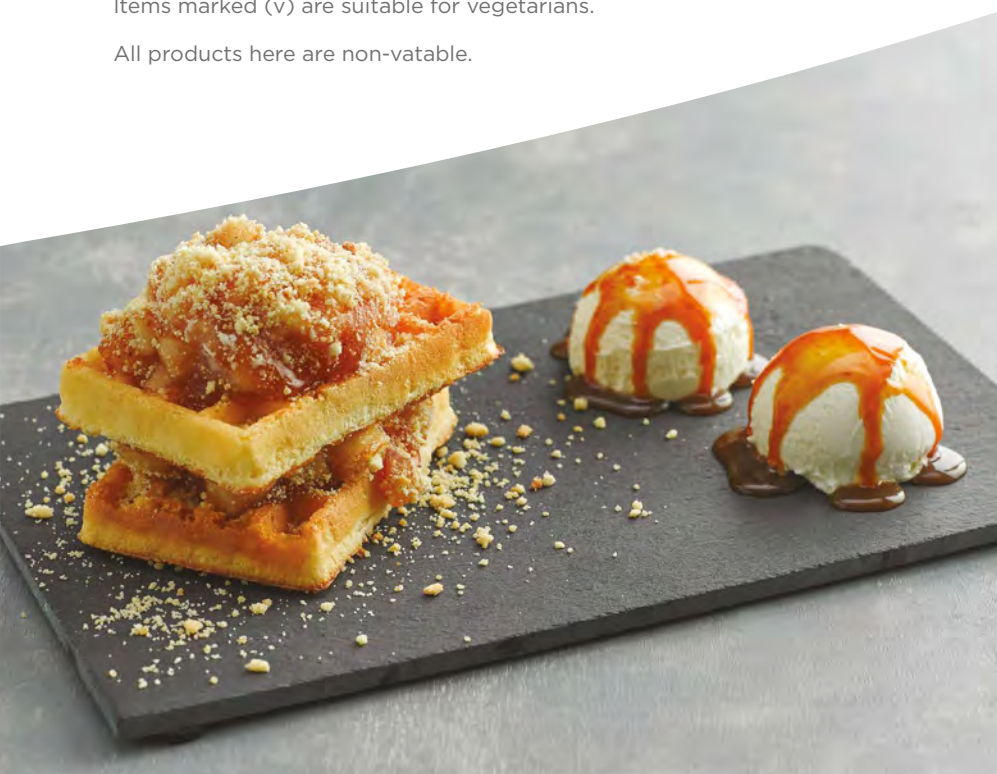


## Popular with Parlours

Code	Product	Units/Kg	Price
<b>Waffles</b>			
135	Belgian Waffles	30	£10.30
BAKO05	Waffle Mix	12.5kg	£35.00
<b>Puddings</b>			
sid003	Gluten free Choc Brownie (v)	12	£11.30
sid014	Chocolate Fudge Brownie	15	£14.60
sid159	IND Sticky Toffee Pudding (v)	12	£11.99
<b>Cookie Dough</b>			
Bako02	Double Chocolate Cookie Pucks	90	£22.00
Bako03	Milk Chocolate Cookie Pucks	90	£22.00
Bako04	White Chocolate Cookie Pucks	90	£22.00
Bako06	Milk Chocolate Cookie Dough (Bucket)	5kg	£26.75
<b>Churros</b>			
141	Churros	2kg	£10.15
146	Chocolate Churros	1.4kg	£10.00
147	Caramel Churros	1.4kg	£10.00

Items marked (v) are suitable for vegetarians.

All products here are non-vatable.





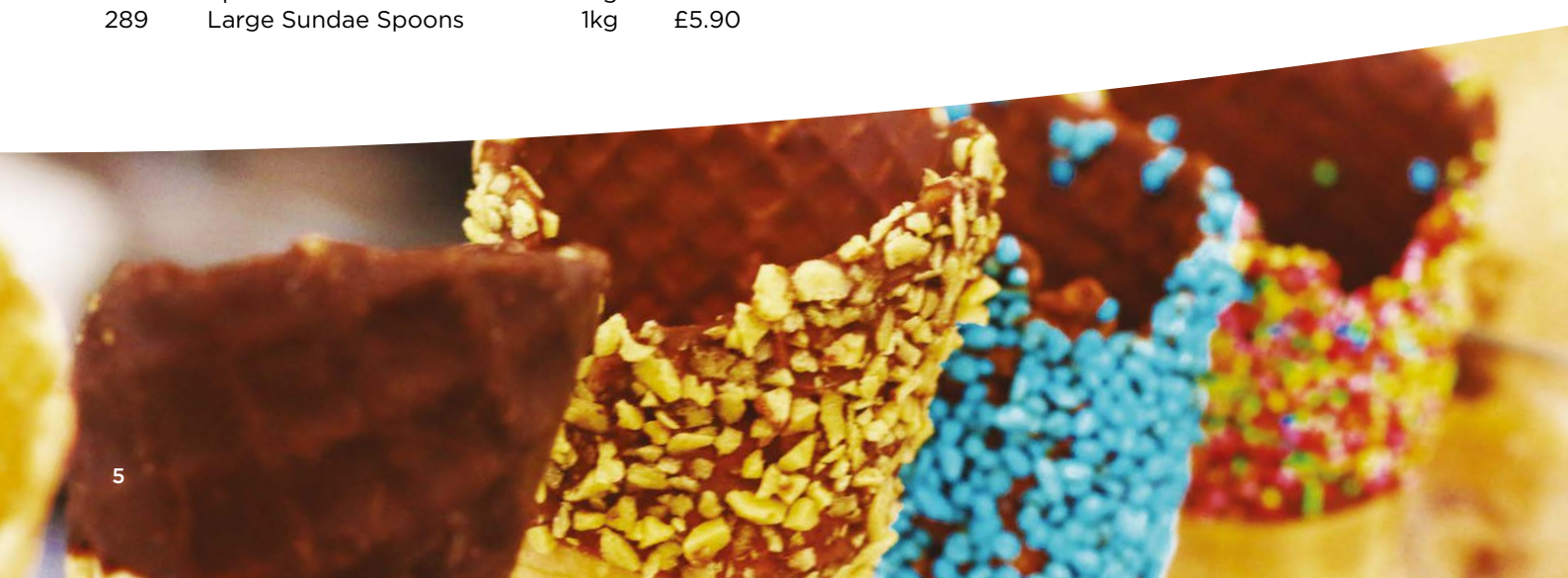


## Tubs & Packaging \*

Code	Product	Units	Price
<b>Tubs</b>			
794	8B 100ml Waxed Fruit Cup	100	£5.10
793	10MG 160ml Waxed Fruit Cup	100	£5.75
789	M2 230ml Waxed Fruit Cup	100	£7.75
798	M3 260ml Waxed Fruit Cup	100	£8.10
781	M4 500ml Waxed Fruit Cup	50	£6.15
226	High ball Containers	80	£3.05
280	Carton 810 (100) only	100	£4.45
281	Carton F 177	100	£2.15
763	Carton F 195	100	£6.65
760	Carton F 250	100	£7.70
761	Carton F 365	100	£7.50
764	Carton F 510	100	£12.85
293	Containers 1 Lt/Lids	252	£109.00
294	Container 1/2 Lt/Lids 100 only	100	£27.30
<b>Lids for Tubs</b>			
799	Lid for 8B 100ml	100	£3.20
796	Lid for 10mg 160ml	100	£5.75
797	Lid for M2/M3 230/260ml	100	£5.65
772	10mg Domed Lid	100	£5.40
748	M2/M3 Domed Lid	100	£5.92
780	Lid or M4 500ml	100	£7.75
290	Lid for (481)	100	£4.65
299	Lid for F Cartons	100	£4.35
<b>Packaging</b>			
270	Greaseproof Paper Small	Pack	£6.15
271	Greaseproof Paper Large	Pack	£6.15
Franc115	Pink Sweet Box (7")	100	£14.00
<b>Spoons</b>			
269	Spoons Small	1kg	£5.15
289	Large Sundae Spoons	1kg	£5.90

## Cones & Wafers

Code	Product	Units	Price
<b>Traditional Cones</b>			
214	Teddy Bear Cones	175	£9.99
197	Carousel Medium Flat Top	420	£10.10
253	Cones Twin Top	189	£10.60
251	Cones Medium	525	£13.75
252	Cones Giant	360	£14.60
<b>Waffle Cones</b>			
WAV03	Small Waffle Cone	294	£33.80
WAV01	Medium Waffle Cone	195	£30.95
WAV06	Large Waffle Cones	128	£34.75
WAV05	Marcantonio Tall Waffle Cone	200	£35.35
<b>Chocolate Dipped Cones *</b>			
cater07	Sprinkled Waffle Cone	56	£21.39
cater08	Bubblegum Waffle Cone	56	£21.39
WAV02	Small Chocolate Waffle Cone	132	£31.00
WAV04	Medium Chocolate Waffle Cone	110	£36.85
WAV07	Tall Chocolate Waffle Cone	168	£48.50
<b>Wafers</b>			
250	Ice Wafers	650	£9.55
255	Fan Wafers	240	£9.80
248	Teddy Bear Wafers	400	£16.57
ROSSI	Rossini Curls	280	£16.73
256	Nougat	60	£12.37
258	Oysters	45	£12.85
242	Retail Oysters	6	£1.49
334	Sponges	24	£3.10
234	Waffle Baskets	74	£23.40





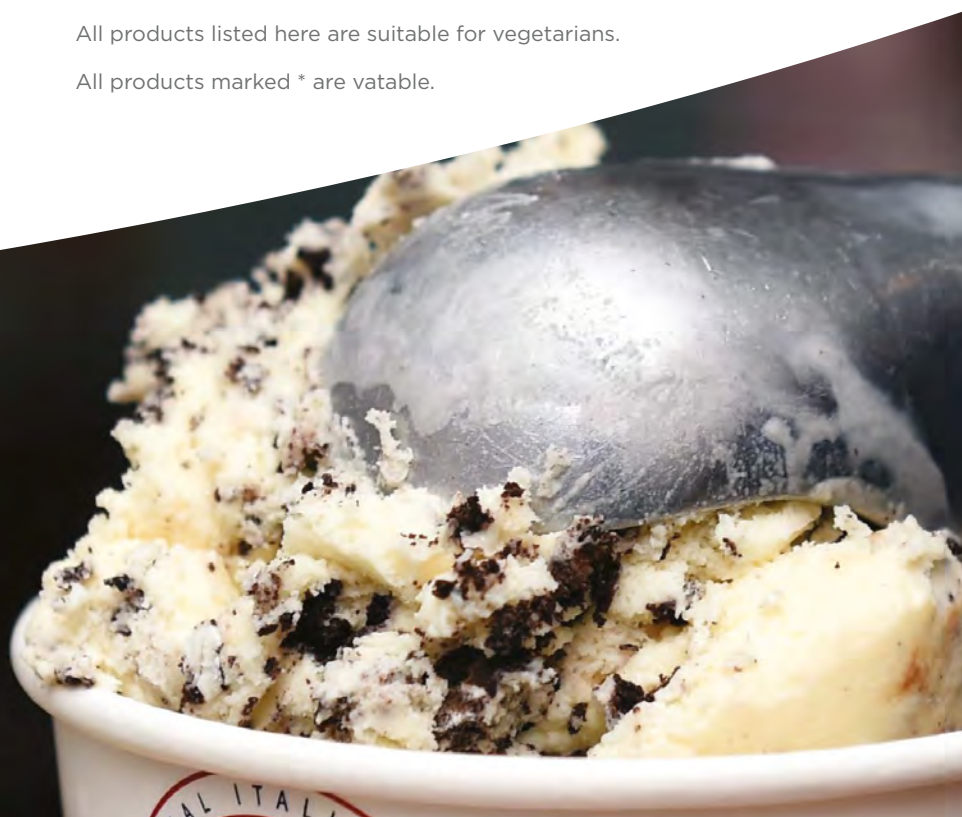
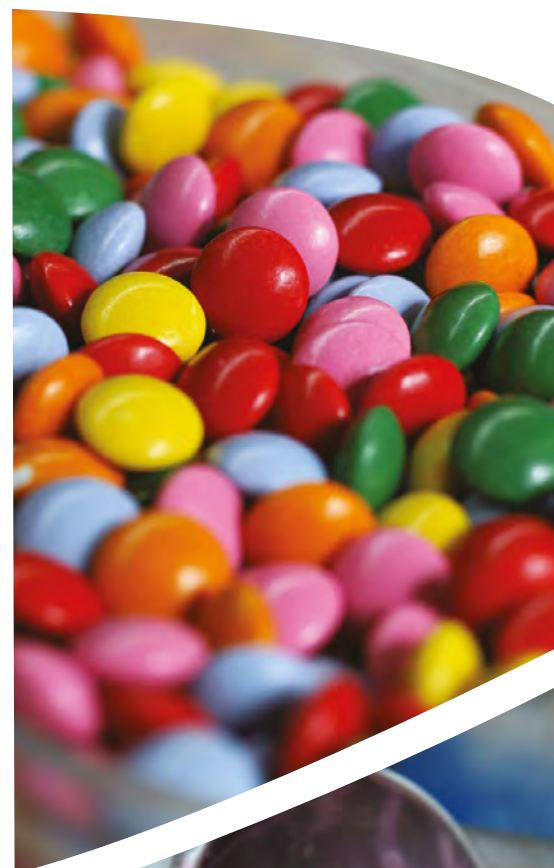


## Toppings

Code	Product	Units/Kg	Price
243	Milk Chocolate Buttons	5kg	£16.75
241	Coloured Sugar Strands	1kg	£3.95
260	Light Vermicelli	1kg	£3.75
257	Smarties *	3kg	£14.50
467	Tablet Squares	2kg	£10.80
450	Nibbed Nuts (Peanuts) *	2kg	£11.05
440	Honeycomb Pieces *	1kg	£5.70
272	Snowballs Tunnocks	36	£5.90
273	Real Chocolate Chips	1kg	£5.90
442	Marshmallows	1kg	£5.40
479	Mini Marshmallows (pink + white)	1kg	£5.40
477	Micro Marshmallows	1kg	£5.40
1030	Chocolate Shavings (MILK)	3kg	£18.70
1031	Dark Chocolate Shavings	3kg	£18.70
443	Fudge Pieces *	1kg	£9.00
452	Toffee Pieces *	1kg	£9.25
189	Mini Meringues *	1kg	£10.00
HB25	White Blossom Curls *	1kg	£10.25
HB26	Milk Chocolate Curls *	1kg	£10.25
HB41	Caramel Curls *	1kg	£10.25
233	Mini Smarties *	2.5kg	£19.99
464	Oreo Pieces	1kg	£11.65
275	Lessiters Chocolate Flakes *	140	£12.50
254	Fudgery Do Fingers *	144	£16.38

All products listed here are suitable for vegetarians.

All products marked \* are vatable.







## Sauces

Code	Product	Units	Price
196	Bubblegum Topping Syrup	625g	£1.70
262	Toffee Topping Syrup	625g	£1.70
263	Chocolate Topping Syrup	625g	£1.70
264	Strawberry Topping Syrup	625g	£1.70
265	Raspberry Topping Syrup	625g	£1.70
267	Lime Topping Syrup	625g	£1.70
199	Maple Syrup	1kg	£6.50
247	Raspberry Syrup	12	£10.80

## Joy Gelato

Code	Product	Units	Price
HB01	Joy Wild Berry Topping Sauce	1kg	£7.00
HB02	Joy Caramel Topping Sauce	1kg	£7.00
HB03	Joy Chocolate Topping Sauce	1kg	£7.00
HB04	Joy Strawberry Topping Sauce	1kg	£7.00
HB06	Joy Tropical Topping Sauce	1kg	£7.00
HB14	Joy Mango Topping Sauce	1kg	£7.00
HB15	Joy Raspberry Topping Sauce	1kg	£7.00
HB24	Joy White Topping Sauce	1kg	£7.20
HB42	Joy Nocciolata Bianco (Kinder)	1kg	£9.50
FRAN44	Fab Mint Topping Sauce	1kg	£10.95
marc05	Hot Chocolate Fudge Sauce	3kg	£21.65
Fran08	Noccialatta Ice	5kg	£33.00

## Scoops & Utensils \*

Code	Product	Price
295	Size 20 Ice Cream Scoops	£25.00
296	Size 30 Ice Cream Scoops	£25.00
301	Eutectic Scoop Size 20	£18.00
302	Eutectic Scoop Size 30	£20.00
303	Plastic Handled Size 20 scoop	£22.00
304	Plastic Handled Size 30 scoop	£22.00
287	Ice Cream Spatula	£8.50
527	Ice Cream Spatula Small	£4.65
555	Sterilising powder	£5.99

## 6kg Range

Code	Product	Kg	Price
444	Toffee Sauce	6kg	£10.85
447	Raspberry Sauce	6kg	£11.30
448	Bubblegum Sauce	6kg	£11.30
449	Strawberry Sauce	6kg	£11.30
459	Chocolate Sauce	6kg	£11.30
268	Raspberry Syrup (Real)	6kg	£11.30

## NIC

Code	Product	Kg	Price
NIC01	Nic White Chocolate Sauce	1.2kg	£8.10
NIC02	Nic Raspberry Sauce	1.2kg	£7.60
NIC03	Nic Toffee Sauce	1.2kg	£7.60
NIC04	Nic Salted Caramel Sauce	1.2kg	£8.10
NIC05	Nic Chocolate Sauce	1.2kg	£7.60
NIC06	Nic Strawberry Sauce	1.2kg	£7.60

## Cherries

Code	Product	Kg	Price
476	Amarena Cherry Jar		£46.31
648	Amarena Cherries Jars	600g	£13.90
Toschi08	Toschi Amarena Cherries	2.75kg	£31.00

## Slush

Code	Product	Units	Price
SIMP006	Crolla's Iron Brew Slush	5lt	£12.95
Simp007	Crolla's Dark Cola Slush	5lt	£12.95
Simp008	Crolla's Energy Slush	5lt	£14.15
Simp443	Crolla's Purple Grape	5lt	£12.95
Simp473	Crolla's Green Sour Apple	5lt	£12.95
Simp476	Crolla's Red Strawberry	5lt	£12.95
Simp477	Crolla's Blue Raspberry	5lt	£12.95
Simp478	Crolla's Kola Cube	5lt	£12.95
Simp479	Crolla's Pink Bubblegum	5lt	£12.95
Simp557	Slush Base Mix	5lt	£13.00







## Milkshake

Code	Product	Units	Price	Code	Product	Units	Price
Toschi01	Banana Milk Shake	1ltr	£10.75	Toschi14	Watermelon	1ltr	£10.75
Toschi02	Chocolate Milk Shake	1ltr	£10.75	Toschi15	Caramel Milk Shake	1ltr	£10.75
Toschi03	Coconut Milk Shake	1ltr	£10.75	Toschi16	Pineapple	1ltr	£10.75
Toschi04	Hazelnut Milk Shake	1ltr	£10.75	Toschi17	Passion Fruit	1ltr	£10.75
Toschi05	Mango Milk Shake	1ltr	£10.75	283	Thick Shake Syrup Chocolate	6kg	£11.99
Toschi06	Mint Milk Shake	1ltr	£10.75	285	Thick Shake Syrup Banana	6kg	£11.99
Toschi07	Irish Cream	1ltr	£10.75	286	Thick Shake Syrup Strawberry	6kg	£11.99
Toschi09	Peach Milk Shake	1ltr	£10.75				
Toschi10	Raspberry Milk Shake	1ltr	£10.75				
Toschi11	Strawberry Milk Shake	1ltr	£10.75				
Toschi12	Vanilla Milk Shake	1ltr	£10.75				

## Cups & Straws \*

Code	Product	Units	Price
471	Clear Milk Shake Straws	250	£2.85
Solo12	12oz Clear Cup	50	£2.75
Solo16	16oz Clear Cup	50	£3.70
Solo12D	Lids for 12oz dome	100	£2.45
Solo16D	Lids for 16oz dome	100	£3.75
569	Clear 20floz Pint Tumblers (568ml)	50	£4.55



All products marked \* are vatable.





# Specialty Ice Creams

**Freezer to table**

**Simplicity.** Just straight from the freezer to your customer's table.



**Code: 052**  
**Nordica Individual**  
1 Unit      £18.50  
Ind. Price   £0.62



**Code: 093**  
**Chocolate Sundaes**  
10 Units    £8.20  
Ind. Price   £0.82



**Code: 095**  
**Strawberry Sundaes**  
10 Units    £8.20  
Ind. Price   £0.82



**Code: 076**  
**Caprizzo Bianco**  
12 Units    £12.00  
Ind. Price   £1.00



**Code: 118**  
**Strawberry Cheesecake**  
8 Units      £9.20  
Ind. Price   £1.15



**Code: 066**  
**White Chocolate/Caramel Truffle**  
8 Units      £9.20  
Ind. Price   £1.15



**Code: 086**  
**Duchess Ann**  
6 Units      £6.90  
Ind. Price   £1.15



**Code: 074**  
**Tartufo Chocolate**  
12 Units    £14.47  
Ind. Price   £1.21



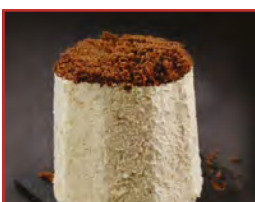
**Code: 075**  
**Tartufo Mint**  
12 Units    £14.47  
Ind. Price   £1.21



**Code: 117**  
**After Dinner Mint**  
8 Units      £10.15  
Ind. Price   £1.27



**Code: 115**  
**Caramel Shortcake**  
8 Units      £10.70  
Ind. Price   £1.34



**Code: 714**  
**Semifreddo Torroncino**  
12 Units    £17.48  
Ind. Price   £1.46



**Code: 108**  
**Coconut Surprise**  
8 Units      £11.90  
Ind. Price   £1.49



**Code: 690**  
**Panna Cotta**  
12 Units    £18.15  
Ind. Price   £1.51



**Code: 641**  
**Fantastica**  
6 Units      £9.20  
Ind. Price   £1.53





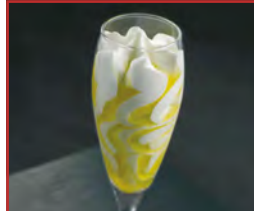
**Code: 642**  
**Chocolate Fantastica**  
6 Units     £9.20  
Ind. Price   £1.53



**Code: 731**  
**Cassata Bindi**  
16 Units     £24.85  
Ind. Price   £1.55



**Code: 092**  
**Tiramisu Cup**  
8 Units     £12.98  
Ind. Price   £1.62



**Code: 102**  
**Limoncello Flute**  
8 Units     £13.13  
Ind. Price   £1.64



**Code: 103**  
**Salted Caramel Flute**  
8 Units     £13.13  
Ind. Price   £1.64



**Code: 712**  
**Tartufo Limoncello**  
12 Units     £19.85  
Ind. Price   £1.65



**Code: 734**  
**Tartufo Classico**  
12 Units     £19.85  
Ind. Price   £1.65



**Code: 081**  
**Coppa Mango**  
8 Units     £13.65  
Ind. Price   £1.71



**Code: 088**  
**Toffee Twilight (Glass)**  
8 Units     £13.65  
Ind. Price   £1.71



**Code: 089**  
**Strawberry Flute (Glass)**  
8 Units     £13.65  
Ind. Price   £1.71



**Code: 069**  
**Turron Cup**  
8 Units     £13.65  
Ind. Price   £1.71



**Code: 055**  
**Coppa Fruta Del Bosque**  
8 Units     £13.65  
Ind. Price   £1.71



**Code: 644**  
**Cookies & Cream**  
8 Units     £15.50  
Ind. Price   £1.94



**Code: 059**  
**Coppa Chocolate Mousse**  
6 Units     £11.77  
Ind. Price   1.96



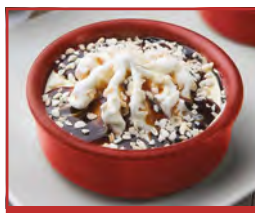
**Code: 096**  
**Snowflake**  
8 Units     £16.22  
Ind. Price   £2.03



**Code: 097**  
**Ferrero Rochella (Glass)**  
8 Units     £16.22  
Ind. Price   £2.03



**Code: 112**  
**Honey Pot**  
6 Units     £12.20  
Ind. Price   £2.04



**Code: 643**  
**Apple Ice Cream Pot**  
6 Units     £14.30  
Ind. Price   £2.38

Ask a member of our team about our free dessert menus.



All products listed here are vatable.





## Real Fruit Skins



**Code: 100**  
**Orange Givres**  
**(Skins)**

6 Units    £8.86  
Ind. Price   £1.48



**Code: 101**  
**Lemon Givres**  
**(Skins)**

6 Units    £8.86  
Ind. Price   £1.48



**Code: 078**  
**Melon Givree**

6 Units    £12.15  
Ind. Price   £2.03



**Code: 079**  
**Pineapple Halves**

8 Units    £15.20  
Ind. Price   £1.90



**Code: 109**  
**Coconut Shells**

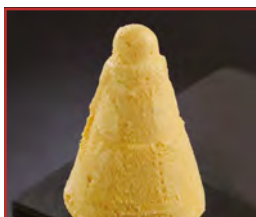
8 Units    £14.85  
Ind. Price   £1.85

## Indian Desserts



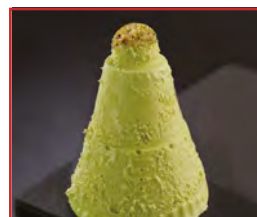
**Code: 080**  
**Malai Kulfi**

12 Units    £8.95  
Ind. Price   £0.75



**Code: 083**  
**Mango Kulfi**

12 Units    £8.95  
Ind. Price   £0.75



**Code: 084**  
**Pistachio Kulfi**

12 Units    £8.95  
Ind. Price   £0.75

## Childrens' Desserts



**Code: 638**  
**Punky**

12 Units    £14.40  
Ind. Price   £1.20



**Code: 639**  
**Kuaky (Chocolate)**

12 Units    £15.45  
Ind. Price   £1.29



**Code: 636**  
**Vacky**

12 Units    £15.45  
Ind. Price   £1.29



**Code: 637**  
**Friky (Strawberry)**

12 Units    £15.45  
Ind. Price   £1.29



**Code: 645**  
**Leo the Lion**

12 Units    £16.75  
Ind. Price   £1.39

All products listed here are vatable.





*A passion  
for Patisserie*







## Cakes & Desserts

### Gateau and Pies

Code	Product	Portions	Price
copp04	Tarte Au Citron	12	£5.15
copp05	Almond cream Cake	12	£5.55
138	Apple Crumble (v)	14	£6.05
184	Chocolate Fudge Gateau (v)	18	£6.10
185	Double Chocolate Gateau (v)	18	£6.10
186	Banoffee Gateau (v)	18	£6.10
131	Black Forest Torte	16	£6.15
132	Peach Melba Torte	16	£6.15
133	Chocolate Cream Torte (v)	16	£6.15
183	Dutch Apple Pie	12	£8.75
160	Lemon Mallow Pie	14	£10.75
sid662	Caramel Apple Granny (v)	14	£13.10
142	Chocolate Fudge Cake (v)	16	£14.60
Sid013	Cookie & Dream (v)	12	£15.45
sid152	Carrot Cake (v)	14	£16.35
sid177	Dime Bar Cake	14	£16.70
145	Red Velvet Fudge Cake	12	£18.00
163	Stairway to Heaven (gf) (v)	14	£18.30
WIN31	Excreme Strawberry Butter Cream	16	£20.50
WIN02	Excreme Chocolate Flake Gateau	16	£20.80
WIN05	Excreme Chocolate Orange Gateau	16	£21.00
WIN15	4 Layer Chocolate Fudge Cake (v)	16	£22.90
WIN30	After Eight Gateau	16	£24.98
WIN14	Black Forest Gateau	16	£26.50
sid010	Tiramisu Di Torino (NEW)	18	£27.00

### Individual Desserts

Code	Product	Units	Price
682	Cannolo Siciliano	10	£19.99
WIN12	Baileys & Toffee Cheesecake	16	£22.00
WIN18	Trio Of Chocolate	16	£22.15
WIN11	Fruit Of The Forest Cheesecake	16	£22.20
174	Raspberry Rippler Cheesecake	25	£25.75
WIN21	Strawberry & Proceso	16	£26.75

### Tray Bakes & Pudding

Code	Product	Units	Price
310	Crolla Caramel Shortcake Squares	12	£5.85
311	White Chocolate Caramel Squares	12	£5.85
cro123	Rocky Road Squares	12	£6.30
sid003	Gluten free Chocolate Brownie (v)	12	£11.30
744	Profiterole Scuro Bianco	12	£11.50
747	Profiteroles Scuro	12	£11.50
SID159	Sticky Toffee Pudding (v)	12	£11.99
158	Sticky Toffee Squares (v)	16	£14.35
sid014	Chocolate Fudge Brownie	15	£14.60
191	Vanilla Slices	24	£14.85
WIN 16	Carrot Tray Bake	18	£16.50







## Cheesecake

Code	Product	Portions	Price
copp06	Chocolate & Toffee Cheesecake	10	£3.85
copp10	Mandarin Cheesecake	14	£6.10
copp11	COPP Strawberry Cheesecake	14	£6.10
162	Banoffee Freezer Cheesecake (v)	12	£14.75
sid011	Honeycomb Bash (v)	14	£15.99
SID176	New York Cheesecake (gf) (v)	12	£16.10
sid012	Cookies n Cream cheesecake pie (v)	14	£16.70
153	Millionaires Cheesecake	14	£16.75

## Vegan Range (NEW)

Code	Product	Portions	Price
167	Vegan Chocolate Truffle (v)	14	£14.75
164	Vegan Blackcurrant and Vanilla (v)	14	£15.45
166	Vegan Salted Caramel Brownie (v)	30	£19.99
165	Vegan Mango and Coconut (v)	24	£24.75

All products marked (v) are suitable for vegetarians.

All products marked (gf) are gluten free.

All products are VAT free.







## Buffet Range

Code	Product	Portions	Price
139	Vanilla Cream Puffs	case	£1.75
124	Mini Vanilla Rolls	case	£2.10
copp07	Raspberry Eton Mess Cheesecake	10	£3.85
copp06	Chocolate & Toffee Cheesecake	10	£3.85
copp08	Chocolate Profiterole Gateau	12	£4.65
138	Apple Crumble (v)	14	£6.05
copp10	Mandarin Cheesecake	14	£6.10
copp11	Strawberry Cheesecake	14	£6.10
184	Chocolate Fudge Gateau (v)	18	£6.10
185	Double Chocolate Gateau (v)	18	£6.10
186	Banoffee Gateau (v)	18	£6.10
131	Black Forest Torte	16	£6.15
132	Peach Melba Torte	16	£6.15
133	Chocolate Cream Torte (v)	16	£6.15
123	Mini Chocolate Éclairs	1kg	£10.99

**BELFIELD**   
FROZEN FOOD SALES PARTNERS



All products here are non-vatable.







# Bulk Ice Cream Range

Code	Product	Litres	Price
<b>Dairy Bulk</b>			
354	10.0 Litre (Dairy Ice Cream) (v)	10	£20.50
351	16 Ltrs (Dairy Ice Cream) (3.5gal) (v)	16	£32.80
<b>Half Dairy Bulk</b>			
809	13 Litre (Half Dairy Ice Cream) (v)	13	£18.15
800	16 Litre (Half Dairy Ice Cream) (v)	16	£20.85
801	22.75 Lt (Half Dairy Ice Cream) (v)	22.75	£31.80
<b>10 Litre</b>			
357	Vanilla (Half Dairy Ice Cream) (v)	10	£14.00
931	Strawberry (Half Dairy Ice Cream) (v)	10	£15.35
932	Chocolate (Half Dairy Ice Cream) (v)	10	£15.35
933	Toffee (Half Dairy Ice Cream) (v)	10	£15.35
935	Raspberry Ripple (Half Dairy Ice Cream) (v)	10	£15.35
936	Blue Bubblegum (Half Dairy Ice Cream) (v)	10	£15.35
937	Caramel Shortcake (Half Dairy Ice Cream) (v)	10	£17.75
938	Iron Brew (Half Dairy Ice Cream) (v)	10	£17.75
930	Mint Chip (Half Dairy Ice Cream) (v)	10	£17.75
934	Honeycomb (Half Dairy Ice Cream) (v)	10	£17.75

All products marked (v) are suitable for vegetarians.

All products here are vatable.





## Fresh Crolla Mix & Long Life Mix

Code	Product	Litres	Price
<b>Fresh</b>			
600	Mix Dairy Store from 1C To 6C	4.55	£10.15
<b>Non Dairy UHT</b>			
711	Mr Sunshine Creamy UHT Mix	12x1lt	£POA

Code	Product	Litres	Price
<b>Dairy UHT</b>			
612	1 Litres Crolla Dairy UHT Mix	12x1lt	£POA
650	5 Litre Crolla Dairy UHT Mix	1x5lt	£POA
651	10 Litre Crolla Dairy UHT Mix	1x10lt	£POA

## Retail Range

Code	Product	Case	Ind. Cost	RRP
<b>Spoon in the Lid</b>				
374	Vanilla	12x120ml	£0.62	£1.15
		£7.40		
375	Mint Choc Chip	12x120ml	£0.62	£1.15
		£7.40		
378	Raspberry Ripple	12x120ml	£0.62	£1.15
		£7.40		
379	Choc Fudge Ripple	12x120ml	£0.62	£1.15
		£7.40		
353	Cheeky Monkey	12x120ml	£0.62	£1.15
		£7.40		
355	Caramel Shortcake	12x120ml	£0.62	£1.15
		£7.40		
356	Strawberry Cheesecake	12x120ml	£0.62	£1.15
		£7.40		

Code	Product	Case	Ind. Cost	RRP
<b>500ml</b>				
370	Vanilla Dairy	6x500ml	£8.80	£1.47
				£2.50
371	Raspberry/Ripple Dairy	6x500ml	£9.95	£1.66
				£2.80
366	Tablet (Scottish)	6x500ml	£9.95	£1.66
				£2.80
367	Sticky Toffee Ripple	6x500ml	£9.95	£1.66
				£2.80
368	Strawberry Ripple	6x500ml	£9.95	£1.66
				£2.80
369	Chocolate Fudge Ripple	6x500ml	£9.95	£1.66
				£2.80
832	Mint/Chip Tall	6x500ml	£9.95	£1.66
				£2.80
833	Caramel Shortcake Tall	6x500ml	£9.95	£1.66
				£2.80
834	Cheeky Monkey Tall	6x500ml	£9.95	£1.66
				£2.80
835	Strawberry Cheesecake Tall	6x500ml	£9.95	£1.66
				£2.80







Code	Product	Case	Ind. Cost	RRP
<b>Jimmy Gelato Retail</b>				
510	Jimmy Gelato 1/2 Lt Vanilla	6x500ml	£6.15	£1.03
511	Jimmy Gelato 1/2 Lt Ras/Ripple	6x500ml	£6.15	£1.03
500	Jimmy Gelato 1 Lt Vanilla	3x1lt	£4.60	£1.53
501	Jimmy Gelato 1 Lt Rasp/Ripple	3x1lt	£4.60	£1.53
526	J.G. Strawberry Smoothie	10 units	£6.90	£0.69

### Traditional Vanilla

373	Kiddicups (110ml) Vanilla	24x110ml	£9.90	£0.42
372	Vanilla 250ml Dairy	12x250ml	£9.80	£0.82
362	Vanilla 1 Litre Dairy	3x 1 litre	£7.20	£2.40
361	Vanilla 2 Litre Dairy Bulk	1x2 litre	£4.80	£3.99

Code	Product	Unit	Price
<b>Ice Lollies</b>			
336	Super Cola Ice Lolly	box	£POA
337	Fizzy Lemonade	box	£POA
339	Bubble Gum Lolly	box	£POA
342	KBG Bubblegum	box	£POA
343	Stella Strawberry Split	box	£POA
347	KBG Chocolate	box	£POA
348	KBG Strawberry	box	£POA
349	Chicco Clown Push up	box	£POA
350	Orange Juice Bar	box	£POA

All products are suitable for vegetarians.

All products here are vatable.







# Terms of Business

The published prices are correct at the time of printing but may alter without notice. VAT will be charged at the standard rate where applicable.

## **PAYMENT**

All products are sold as cash on delivery unless a credit agreement has been established. Credit terms are monthly. Failure to comply with these terms could result in no further deliveries and, in extreme cases, legal action.

## **ORDERS**

Within our delivery catchment area there will be no minimum order required for delivery. However if you require a delivery outwith our delivery area a minimum order may be applicable. (Please call to find out our delivery areas).

## **DAMAGES AND SHORTAGES**

Any damages or shortages must be notified to us within 24 hours of delivery. Please note that Credits or replacements will not be given until our Quality Control Department has inspected the returned goods.

## **AVAILABILITY**

All products are subject to availability. Although we stock everything that is on this price list sometimes circumstances beyond our control may cause shortages.

## The Crolla Ice Cream Company Ltd

**Address:** 48 Jessie Street  
Polmadie, Glasgow  
G42 0PG  
**Telephone:** 0141 423 1161  
**Fax:** 01414232596  
**Email:** [sales@crollaicecream.co.uk](mailto:sales@crollaicecream.co.uk)  
**Website:** [www.crollaicecream.co.uk](http://www.crollaicecream.co.uk)

If you have any dietary requirements or concerns regarding allergens, please do not hesitate to ask a member of our team.











[CrollaIceCream.co.uk](http://CrollaIceCream.co.uk)